



# MHU

## 300

Power  
8 kW

Max weld surface  
300 cm<sup>2</sup>

Max weldable electrode width  
200 mm

Free space behind electrode  
-

Daylight (45 mm tall electrode)  
80 mm

Power requirement - max/hour  
5.5 kW/h

Main fuse - type D  
32 A

Working frequency  
27.12 MHz

## 400

Power  
10 kW

Max weld surface  
400 cm<sup>2</sup>

Max weldable electrode width  
200 mm

Free space behind electrode  
-

Daylight (with 45 mm tall electrode)  
80 mm

Power requirement - max/hour  
5.8 kW/h

Main fuse - type D  
32 A

Working frequency  
27.12 MHz

## 500

Power  
12 kW

Max weld surface  
500 cm<sup>2</sup>

Max weldable electrode width  
200 mm

Free space behind electrode  
-

Daylight (with 45 mm tall electrode)  
80 mm

Power requirement - max/hour  
6.2 kW/h

Main fuse - type D  
32 A

Working frequency  
27.12 MHz

## 650

Power  
16 kW

Max weld surface  
650 cm<sup>2</sup>

Max weldable electrode width  
200 mm

Free space behind electrode  
-

Daylight (with 45 mm tall electrode)  
80 mm

Power requirement - max/hour  
6.9 kW/h

Main fuse - type D  
63 A

Working frequency  
27.12 MHz

## 800

Power  
20 kW

Max weld surface  
800 cm<sup>2</sup>

Max weldable electrode width  
200 mm

Free space behind electrode  
-

Daylight (with 45 mm tall electrode)  
80 mm

Power requirement - max/hour  
7.6 kW/h

Main fuse - type D  
63 A

Working frequency  
27.12 MHz





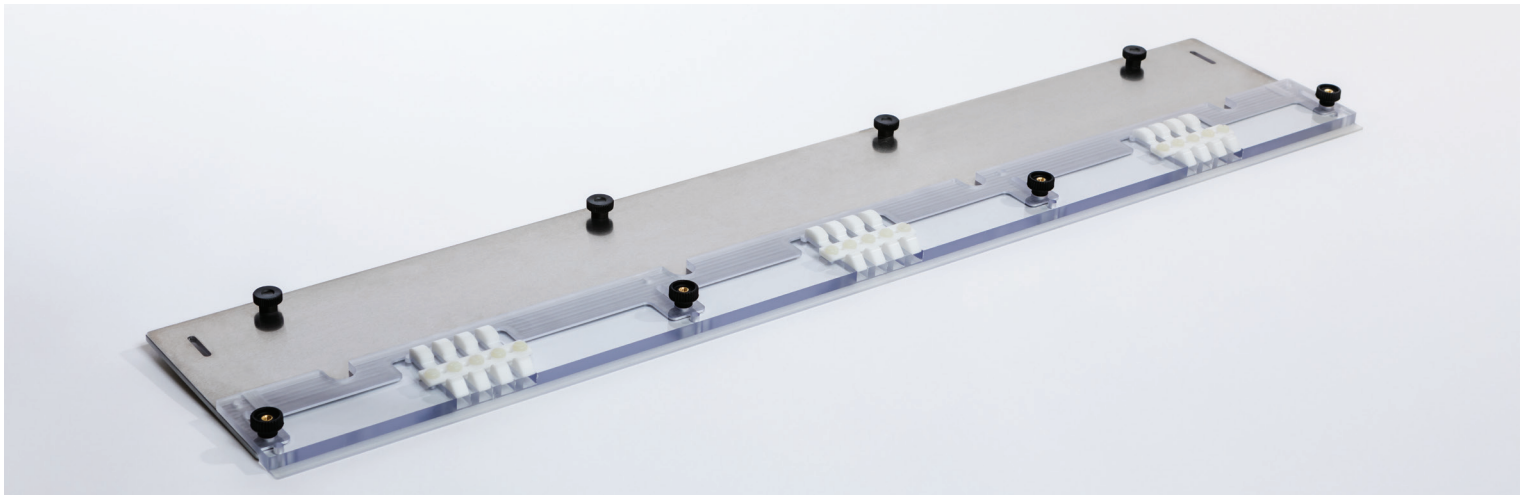
## Operating system and Software

### Operating system

The operating system is developed by Forsstrom programmers and sales representatives with experience in the field. It is a system developed for welders by welders. The computer features a 12" touch screen.

### Software

Forsstrom iQ is designed to monitor and analyze users' HF/RF welding department. Powerful reporting tools allow quick identification of weak points and bottlenecks resulting in optimal usage of production capacities.



## Extras

### Computer and Software

- Data transfer program
- Travel programs
- Control programs

### Material positioning

- Band holder
- Magnet system
- Vacuum system
- Laser lines

### Welding tools

- Electrodes
- Impulse welding unit
- Tube-closing tools
- Supplementary tool

### Other

- Cooling
- Welding table



[forsstrom.com/machine/mhu-280-automatic](https://forsstrom.com/machine/mhu-280-automatic)

Learn more about the benefits of having the Forsstrom MHU as part of your production.

Call or email Forsstrom sales:  
Tel: +46 523 66 66 00  
[sales@forsstrom.com](mailto:sales@forsstrom.com)

All machines are manufactured on order according to customer specification. We make sure it is equipped to make your production as efficient as possible.